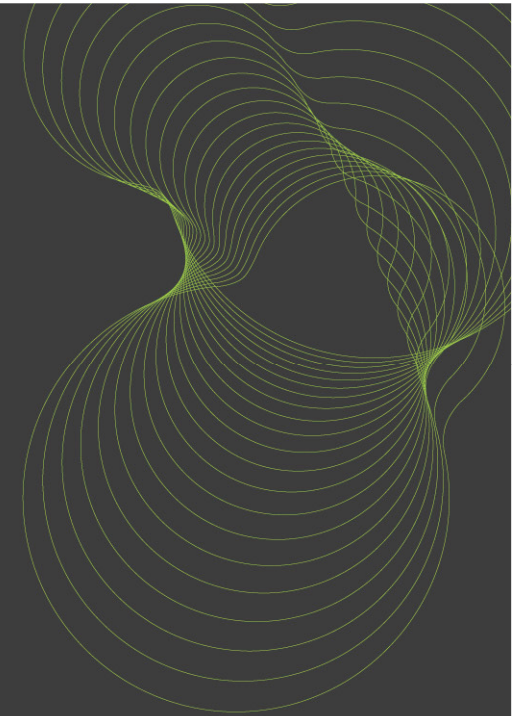


bre



CMS 2009

Gilli Hobbs

Centre for Resource Efficiency

England target

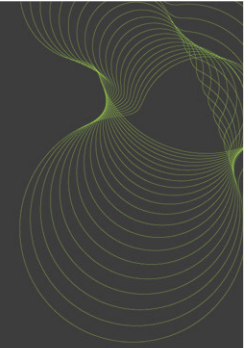
Waste strategy target -

Halve the amount of construction, demolition and excavation waste going to landfill by 2012

Other actions in Sustainable construction strategy include:

- Extend plasterboard agreement to rest of supply chain
- Guidance for small builders
- Construction Waste Commitment to halve waste to landfill
- Reduce packaging waste by 20%
- 3 resource plans
- 2 product roadmaps
- Agree target for diverting demolition waste from landfill

Working with industry



- Voluntary commitments for plasterboard waste reduction and diversion from landfill
- 2 new agreements (resource plans) for joinery and flooring waste
- Product roadmaps – window systems and plasterboard (wider environmental perspective)
 - What are the impacts
 - Are they being addressed
 - What else can be done to improve
- 1/2 W2L construction waste commitment – 120 signed up

Site Waste Management Plans

- Mandatory from April 2008
- BRE tool = Smartwaste plan – web-based site waste management planning tool, 3200 companies registered, data used to produce benchmarks
 - Refurbishment
 - Demolition
 - Construction type
 - Site, company, process & product
 - Levels of reuse, recycling & recovery

m³/100m² Results for projects completed by 14/2/08

Date	28/2/09	
Project Type	Number of completed projects	m ³ /100 m ²
Residential	121	14.2
Public Buildings	8	26.3
Leisure	3	12.3
Industrial Buildings	5	20.1
Healthcare	14	14.8
Education	19	15.5
Commercial Retail	26	15.1
Commercial Offices	28	19.1
Civil Engineering	7	26.1
Total	231	

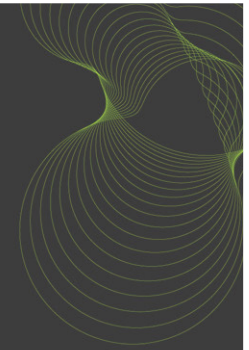
bre

Also have m³/£100K, tonnes/100m², tonnes/£100K

Breakdown of performance indicators by product for residential projects

Product	m ³ /100m ²	m ³ /£100K
Canteen/office/ad-hoc	1.798	1.998
Ceramics/bricks	1.573	2.318
Concrete	2.128	3.606
Electrical equipment	0.141	0.140
Furniture	0.063	0.117
Hazardous	0.014	0.018
Inert	0.700	1.169
Insulation	0.936	1.426
Liquids and Oils	0.005	0.010
Metals	0.584	0.555
Packaging	2.587	3.380
Plaster/cement	1.723	1.980
Plastics	1.032	1.360
Timber	1.647	1.551
Grand Total	14.9	19.6

Benchmarks of $\text{m}^3/100\text{m}^2$ for standard, good and best practice



	Best practice	Good practice	Standard practice
Residential	< 8.1	8.1-13.3	>13.3
Commercial Retail	<7.0	7.0-12.0	>12.0
Commercial Offices	<7.8	7.8-11.1	>11.1
Education	< 8.5	8.5-11.5	>11.5

Code for Sustainable Homes

All homes to get rating from May 2008

Levels 1 – 6

Lots of categories, including waste

Site waste management plan with more reporting and target set (mandatory)

Reduce 3 waste types (1 credit)

Divert from landfill 3 waste types (1 credit)

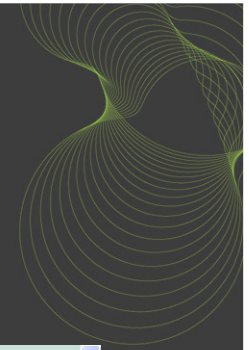


Code for Sustainable Homes
Technical guide
April 2008



True Cost of Waste Calculator

www.wastecalculator.co.uk



The true cost of waste

an online tool to help reduce waste from the construction sector

[About True Cost of Waste Calculator](#) |
 [Company home](#) |
 [Project home](#) |
 [Material Information](#) |
 [Log out](#)

Project: ff

Materials Summary Printer friendly

▼ Materials Summary Using Default Wastage Rates

Category	Tonnes			Cost of waste (£)				
	Total Material	Wasted Material	Wastage rate	Material	Wasted	Labour	True Cost of	True Cost of
	Quantity	Quantity	Embodied Carbon	Cost	material cost	cost	mixed waste	segregated waste
							40% void	40% void
Bricks	-	-	-	-	-	-	-	-
Tiles and Ceramics	1	0	0.1	1,744	140	1	142	141
Concrete	16	1	0.3	7,613	381	10	402	395
Inert	-	-	-	-	-	-	-	-
Insulation	2	0	0.1	1,217	64	69	218	-
Metals	0	0	0	0	0	0	0	0
Gypsum	1	0	0	148	11	2	16	-
Binders	-	-	-	-	-	-	-	-
Plastics	-	-	-	-	-	-	-	-
Floor coverings (soft)	-	-	-	-	-	-	-	-
Asphalt and tar	-	-	-	-	-	-	-	-
Total: 20	1	0.5		10,722	596	83	779	683

Wasted material quantity

0.8

Done

Internet 100%

W115 – waste reduction sub group

- Produce report from represented countries by December 2009 (draft by October 2009)
- ‘Waste reduction around the world’
- To contain the following for each country (as available):
 - Latest statistics on construction, demolition, refurbishment and excavation waste for the country
 - Any benchmark data/ performance indicators on wastage of key construction materials/ products
 - Any benchmark data on waste arisings for different construction types
 - Policies, strategies and legislation in place (or due to be) to reduce construction related waste
 - Guidance documents/ reports linked to construction waste reduction
 - Exemplars, case studies where material resources and waste have been significantly reduced